

FIE

FUJI Elevators

FUJI 未来をリードする FUJI LIFTING THE FUTURE

HEAD OFFICE:

FUJI ELEVATOR CO., LTD.

Address: 富士エレベーター株式会社東京都府中市日新町 5-63-6. 183-0036. JAPAN.

TEL: +81-354562348

FAX: +81-354562348

Email: sales_hq@fujielevatorjapan.com

Web: www.fujielevatorjapan.com

CHINA BRANCH:

FUJI INDUSTRY (NINGBO) CO., LTD.

Address: 489 WEST JINSHAN RD, YINZHOU DISTRICT, NINGBO, ZHEJIANG, China.

TEL: +86-18260179694

WhatsApp: +86-18260179694

Email: sales@fujielevatorjapan.com

Web: www.fujielevatorjapan.com

THAILAND FACTORY:

FUJI ELEVATOR MANUFACTURING (THAILAND) CO., LTD.

Address: 232-234 RAMA 3 RD, BANGKAULAEM, BANGKOK 10120. THAILAND.

TEL: +66-22893938

FAX: +66-26892424

Email: sales@fujielevatorjapan.com

Web: www.fuji-elevator.co.th



Copywrite © FUJI INDUSTRY (NINGBO) CO., LTD.



Visit Website



FUJI INDUSTRY (NINGBO) CO., LTD.



Up till now, we have won 94 patents (16 inventions, 45 utility models, 15 industrial design, 3 software copyright). And we have achieved iS09001 Quality System certification and IS010012-1 Measurement System Certification.



The performance-upgraded control system adopts a high performance 32-bit DSP processor, which has strong anti-interference ability to comprehensively improve the system's response speed and reliability.



GREETINGS

FUJI INDUSTRY ELEVATOR CO., LTD. is an international enterprise. Our company has been involved in the global industrial industry for more than 60 years and is committed to the development of core products and technologies of industrial fields.

Over the years, we have deepened our cooperation with global regions and have established branches or agents around the world to provide our customers with perfect products and efficient service. To further strengthen our global supply chain and manufacturing capabilities, we have established state-of-the-art production plants in key strategic locations, including China and Thailand. Our facility in China leverages the robust regional supply chain and advanced infrastructure to serve the vast Asian market, while our plant in Thailand focuses on specialized production, benefiting from its strategic position in Southeast Asia. Both plants operate under our unified global standards for quality, efficiency, and sustainability, ensuring that every product meets the high expectations of our international clientele.

With our pursuit of industrial innovation and accumulated experience for a long time, we have contributed our strength to the global industrial industry, deepened mutual cooperation among industrial chains, provided comprehensive technical guidance and support, and become a reliable enterprise for all customers in various fields.

Otani Notake

President

The research and development of this technology is still representing the trend of future development of the elevator industry. Machines using this technology do not need excitation and have small starting currents but extremely high transmission efficiency and more reasonable structures compared with traditional traction machines, they have higher efficiency, lower noise, and better environmental and energy-saving performance. They significantly reduce the cost by saving up to more than 30% of energy.





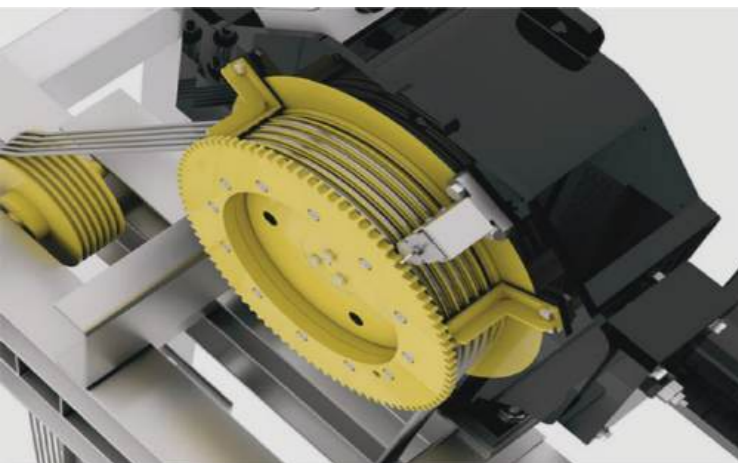
Intelligent Light Curtain Protection

The high-beam light curtain system is sensitive, efficient and accurate. It can automatically detect the fault location while ensuring personal safety, providing a basis for quickly solving the light curtain problem.



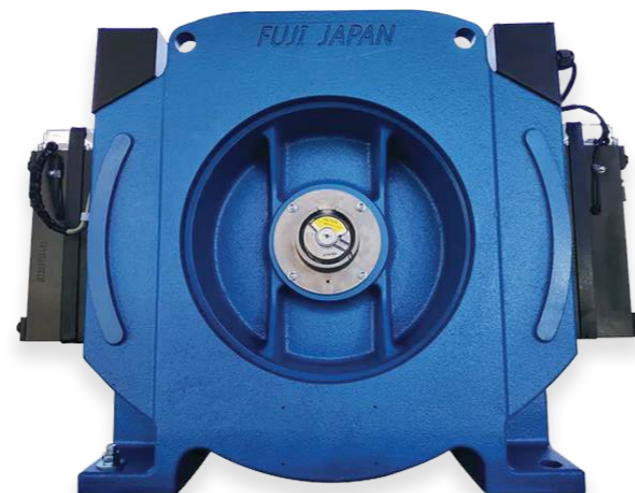
UCMP Protection System

When the elevator is in the leveling position and the door is opened, if there is an accidental movement, the UCMP protection device will immediately start to make the elevator stop safely to prevent accidents.



PMS Gearless Traction Machine

The new generation permanent magnet synchronous traction machine (gearless machine) exceeds national standard requirements for both braking torque and load capacity, ensuring exceptional elevator operational reliability and safety.



OPTIMIZE SPACE & INCREASE VALUE

Small machine room elevator High-efficient use with small space for free travel

- Make efficient use of space to improve building quality
- Simplify the installation process and shorten the installation
- Reasonably communicate design to reduce energy consumption

Machine roomless elevator Unlimited possibilities

- No need to set up a host machine room, which greatly saves construction costs
- Optimize the building space and provide more possibilities for architectural design
- No need to reserve complex holes, and civil construction requirements are simpler



10%

It saves 10% of the building area.

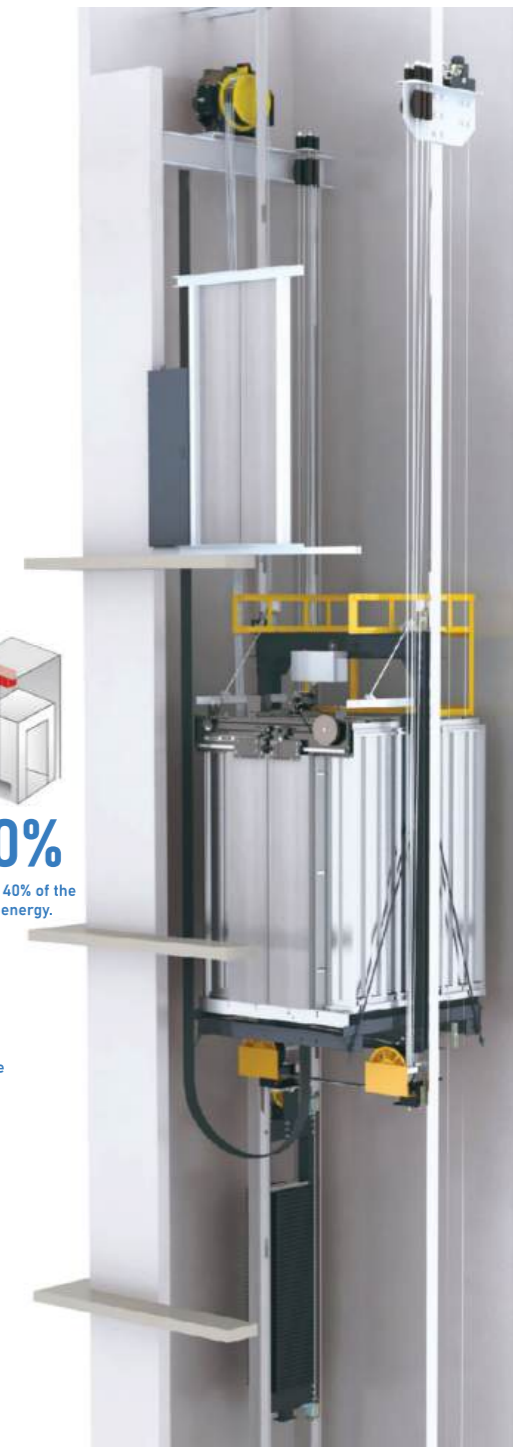


40%

It saves 40% of the electric energy.

25%

It enhances 25% of the efficiency



Passenger Elevator

Standard Cabin Configuration



C01 Standard Cabin

Ceiling : Hairline stainless steel, acrylic board, LED energy saving lamp (T-12)
 Car wall : Hairline stainless steel, rear wall mirror etching
 Handrail : Hairline stainless steel single tube
 Floor : PVC floor(D-01)

COP & LOP (Standard)

COP Design

COP-01
 Surface : Hairline steel plate
 Display : 7-inch picture machine

LOP Design

LOP-01
 Surface : Hairline steel plate
 Display : 4.3' Segment Code LCD

Landing Door (Standard)



COP-01

Intergrated COP



Fire Switch



LOP-01

Without bottom case



L-01

GF Landing door hairline stainless steel, other doors painted steel.



<C02

Ceiling : Hairline stainless steel, acrylic lighting, LED lights
 Car wall : Hairline stainless steel, mirror etching
 Handrail : Hairline St.St single round tube
 Floor : Marble floor(D-01)



C03>

Ceiling : Stainless steel plate, acrylic soft lighting
 Car wall : Hairline St.St & mirror etching
 Handrail : None
 Floor : PVC (Standard)



<C06

Ceiling : Mirror stainless steel plate, acrylic lightings
 Car wall : Hairline St.St & mirror etching on three walls
 Handrail : Titanium gold single round tube
 Floor : PVC (Standard)



C07>

Ceiling : Mirror St.St, acrylic lighting, LED lights
 Car wall : Hairline stainless steel, mirror etching St.St
 Handrail : St.St tube armrest
 Floor : PVC or marble



<C04

Ceiling : Hairline stainless steel with acrylic photic board
 Car wall : Hairline St.St
 Handrail : None
 Floor : PVC (standard), Marble (Optional)



C05>

Ceiling : Mirror stainless steel top, acrylic transparent plate, down lamp
 Car wall : Hairline etching St.St & Hairline St.St
 Handrail : Hairline St.St single tube
 Floor : PVC floor



<C08

Ceiling : Mirror stainless steel, acrylic transparent-board, LED lights
 Car Wall : Mirror etched stainless steel for center plate, auxiliary hairline stainless steel
 Handrail : None
 Floor : PVC(Standard)



C09>

Ceiling : Stainless steel plate, acrylic transparent panel, energy-efficient LED lighting (T-02)
 Car wall : Hairline stainless steel, mirror etching
 Handrail : Hairline stainless steel (F-01)
 Floor : Marble floor(D-01)



<C10

Ceiling : Stainless steel plate, acrylic lighting
 Car wall : Hairline stainless steel, mirror etching St.St
 Handrail : Hairline St.St single round tube (F-01)
 Floor : Marble floor(D-01)



C11>

Ceiling: Mirror St.St, acrylic transparent plate, LED lights
 Car Wall: Black titanium mirror etched St.St, hairline St.St, black titanium mirror plate
 Handrail: None
 Floor: PVC(Standard)



<C14

Ceiling : Mirror stainless steel, acrylic transparent board, LED lights
 Car Wall : Mirror etched stainless steel, auxiliary hairline Stainless steel
 Handrail : None
 Floor: PVC(Standard), Marble(Optional)



C15>

Ceiling : Mirror stainless steel & spot light
 Car wall : Hairline stainless steel & mirror etching
 Handrail : Hairline St.St single round tube
 Floor : PVC



<C12

Ceiling: Hairline stainless steel, LED Lights
 Car wall: Mirror etching & Hairline St.St
 Handrail: Hairline St.St flat
 Floor: PVC (standard)



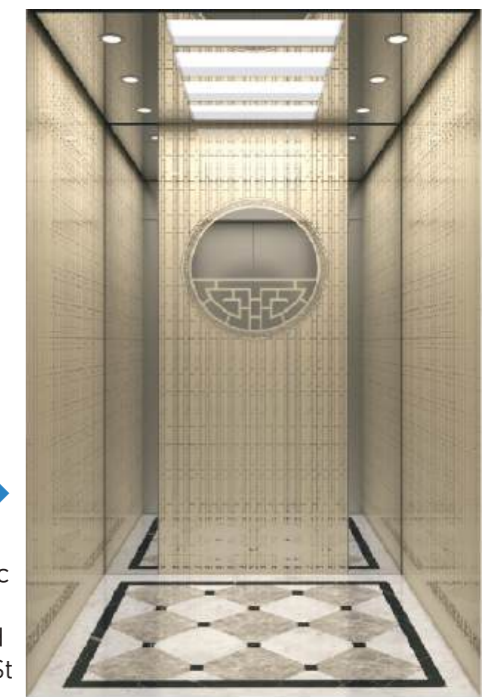
C13>

Ceiling : Mirror St.St plate, acrylic transparent panel, energy- efficient LED lighting
 Car wall : Hairline St.St & mirror etching St.St
 Handrail : None
 Floor : Marble floor



<C16

Ceiling : Black titanium mirror St.St frame, acrylic
 Car Wall : Black titanium St.St with mirror St.St + art glass
 Handrail : Hairline St.St+ Black titanium round single tube
 Floor : PVC floor



C17>

Ceiling : Mirror St.St, acrylic LED lights
 Car Wall : Champagne gold sprayed mirror etching St.St & mirror, auxiliary panels are champagne gold sprayed mirror etching St.St
 Handrail : None
 Floor : PVC(Standard)

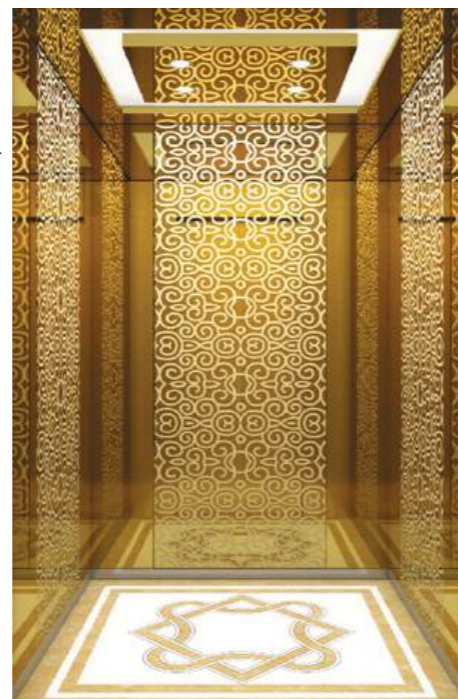


<C18

Ceiling : Titanium gold mirror frame, downlight, middle white transparent plate
 Car wall : Titanium gold mirror etching, titanium gold hairline stainless steel
 Handrail : Titanium gold hairline flat handrail
 Floor : PVC

C19>

Ceiling : Titanium gold mirror St.St, acrylic lighting, LED lighting
 Car wall : Titanium gold mirror etched St.St
 Handrail : None
 Floor : PVC (Standard)



<C22

Ceiling : Bronze mirror frame, white transparent plate
 Car wall : Walnut wood veneers, bronze brushed etched
 Handrail : Bronze stainless steel single tube
 Floor : PVC

C23>

Ceiling : St.St frame, central shape top board
 Car wall : Hairline St.St, wood panels, mirror edge
 Handrail : St.St rose gold single round tube
 Floor : PVC



<C20

Ceiling : Metal frame with baking paint & hidden lights, mirror etched ceiling with metal frame of baking paint
 Car wall : wood plate in the middle with serpeggiante decorations on both sides, mirror stainless steel
 Handrail : Titanium gold single round tube
 Floor : Serpeggiante floor

C21>

Ceiling : Titanium mirror St.St, middle white transparent board
 Car wall : Titanium hairline St.St & mirror etched
 Handrail : Titanium rose gold single round tube
 Floor : Marble parquet floor



<C24

Ceiling : Rose gold stainless steel, acrylic lighting, LED light
 Car wall : Mirrored, sandblasted, rose gold.
 Handrail : None
 Floor : PVC (standard), Marble (Optional)

C25>

Ceiling : Hairline St.St plated T.bronze + mirror finished stainless plated in T.bronze+ LED light + hidden lamp
 Car wall : Hairline St.St plated in titanium bronze + mirror finished St.St plated in titanium bronze + etched mirror
 Handrail : St.St flat tube
 Floor : Parquet stone



Home Elevator



◀V01

Ceiling : Champagne gold mirror stainless steel, return-light belt, LED
 Car wall : Champagne gold hair pattern stainless steel, mirror etched stainless steel
 Handrail : None
 Floor : PVC



V02▶

Ceiling : Steel plate spraying, black titanium mirror SS trim, hidden light belt
 Car wall : Black titanium hairline stainless steel, wire glass, mirror SS trim, wood veneer
 Handrail : None
 Floor : PVC



◀V03

Ceiling : Steel plate spraying, bronge sandblasted stainless steel, LED light
 Car Wall : Fish belly white rock plate on both sides of wood veneer titanium stainless steel & wooden finish
 Handrail : Wooden handrail
 Floor : Marble



V04▶

Ceiling : Steel plate spraying
 Car Wall : Safety laminated glass, side wall is stainless steel + Safety laminated glass + Aluminum alloy
 Floor : PVC

View The Scene In 360 Degree

Panoramic Elevator

Panoramic elevator in FUJI Industry Elevator Company integrates aesthetics, taste and comfort, creating a landscape in the urban architectural with a panoramic design. A panoramic elevator transforms vertical travel into a breathtaking experience, merging elegant engineering with architectural artistry. Its transparent design acts as a moving observatory, offering an ever-unfolding view of the urban landscape. This fusion of aesthetics and innovation creates more than mere transit; it creates a fleeting moment of wonder, turning a simple ascent or descent into a dynamic and memorable journey.



<S01

Upper/lower hood : Titanium golden mirror St.St
 Observation wall : Laminated glass
 Ceiling : Titanium gold mirror stainless steel + acrylic+ LED downlights
 Car wall : Titanium gold mirror stainless steel
 Handrail : Titanium gold mirror St.St round triplex
 Floor : PVC



S02>

Upper/Lower Cover : Steel spraying, hairline stainless steel
 Observation Wall : Safety laminated glass
 Decoration Ceiling : Hairline St.St, LED lights, acrylic decorative lights
 Car Wall : Hairline St.St, steel spraying
 Handrail : Stainless steel round tube
 Floor : PVC (Standard)



<S03

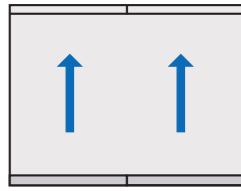
Upper/Lower Cover : Steel plate paint, lighting
 Observation Wall : Safety laminated glass
 Decoration Ceiling : Steel plate paint top, ivory acrylic lighting
 Car Wall : Stainless steel
 Handrail : Stainless steel double pipe
 Floor : PVC (Standard)



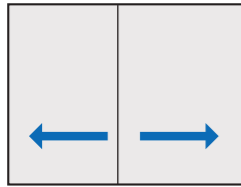
S04>

Upper/Lower Cover : Hairline SS
 Observation Wall : Safety laminated glass
 Decoration Ceiling : Mirror stainless steel, LED panel
 Car Wall : Hairline stainless steel
 Handrail : Stainless steel flat
 Floor : PVC (Standard), Marble (Optional)

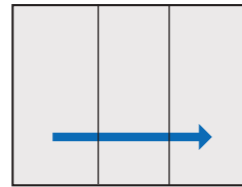
Hospital Bed Elevator



Opposite Door Type



Center Opening Type



Slide Opening Type



H01

Ceiling : Hairline stainless steel, LED lights
 Car Wall : Hairline stainless steel
 Car Door : Hairline stainless steel
 Handrail : Stainless steel flat armrest
 Floor : PVC, Marble (Optional)

Car Elevator



<C01

Ceiling : Painted steel
 Ventilation : Circular fan
 Car Wall : Painted steel
 Car Door : Painted steel
 Handrail : None
 Floor : Chequered plate steel

Freight Elevator



<F01

Ceiling : Painted steel
 Ventilation : Circular fan
 Car Wall : Painted steel
 Car Door : Painted steel
 Handrail : None
 Floor : Chequered plate steel



Escalator Moving Walkway

Escalators are moving staircases designed to transport people between different levels of a building. They consist of a continuous loop of steps that move on tracks, powered by an electric motor.

Moving walks are motorized conveyor systems that transport people horizontally or on an incline over short to medium distances.



COP & LOP (Optional)

COP-02

Surface:
Hairline stainless steel



LOP-02A Simplex



LOP-02B Duplex



COP-03

Surface:
Titanium gold stainless steel



LOP-03A Simplex



LOP-03B Duplex



COP-04

Surface:
Glass touch screen



LOP-04A Simplex



LOP-04B Duplex



COP-05

Intergrated COP
Surface:
Hairline stainless steel



LOP-05A
Simplex



LOP-05B
Duplex



Display (Optional)





- | | | | |
|--|--|---|---|
| XS01
10.4inch
picture display | XS02
10.4inch
video display | XS03
7inch
picture display | XS04
9.7inch
picture display |
|--|--|---|---|



Button (Optional)

- | | | | |
|---|--|--|---|
| B01
Ultrathin bottomless box
Button with braille |  | B02
Zinc alloy
Round button |  |
| B03
Stainless steel
Nail type button |  | B04
Transparent resin
Square button |  |

Horizontal Hall Display (Optional)

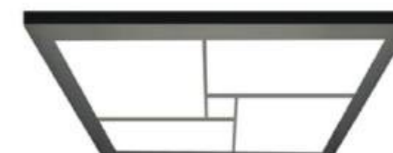
- | | |
|--|--|
| HX01
 | HX02
 |
| HX03
 | HX04
 |

Optional Decoration

Ceiling series (Optional)



T04
Mirror stainless steel
Energy saving lamp



T11
Mirror stainless steel frame
Acrylic soft light illumination
design



T12
Mirror stainless steel frame
Acrylic soft light illumination design
Four side downlight



T13
Hairline stainless steel frame
Acrylic
LED downlight



T14
Mirror stainless steel frame
Middle image line light-transmitting
plate



T15
Hairline stainless steel frame
Acrylic
LED downlight



T16
Stainless steel frame
Acrylic
LED downlight



T17
Stainless steel frame
Acrylic



T18
Ti-plated stainless steel frame with
acrylic top panel
Downlights

Optional Decoration

Landing Door series (Optional)

Handrail series (Optional)



F01 Stainless steel single pipe



F02 Stainless steel double pipe



F03 Stainless steel flat armrest



F04 Titanium gold stainless steel single pipe



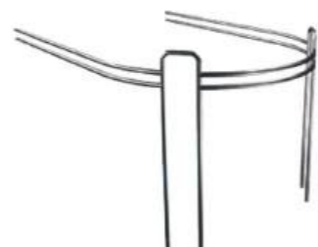
F05 Titanium gold stainless steel double pipe



F06 Solid wood, titanium stainless steel



F07 Stainless steel tube model handrail



F08 Stainless steel tube model handrail



F09 Stainless steel tube model handrail



L02
Mirror Etching



L03
Hairline stainless steel Etching



L04
Hairline stainless steel Glass



L05
Titanium, mirror, etching, Vibration finish



L06
Black titanium mirror stainless steel Etching



L07
Rose gold hairline stainless steel Etching



L08
Hairline stainless steel Etching



L09
Titanium mirror stainless steel Etching

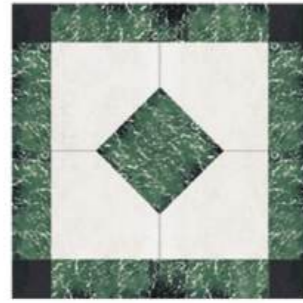
Construction Parameters

Small Machine Room Type Passenger Elevator

Floor series (PVC)



D02
Standard



D03
Optional



D04
Optional



D05
Optional



D06
Optional

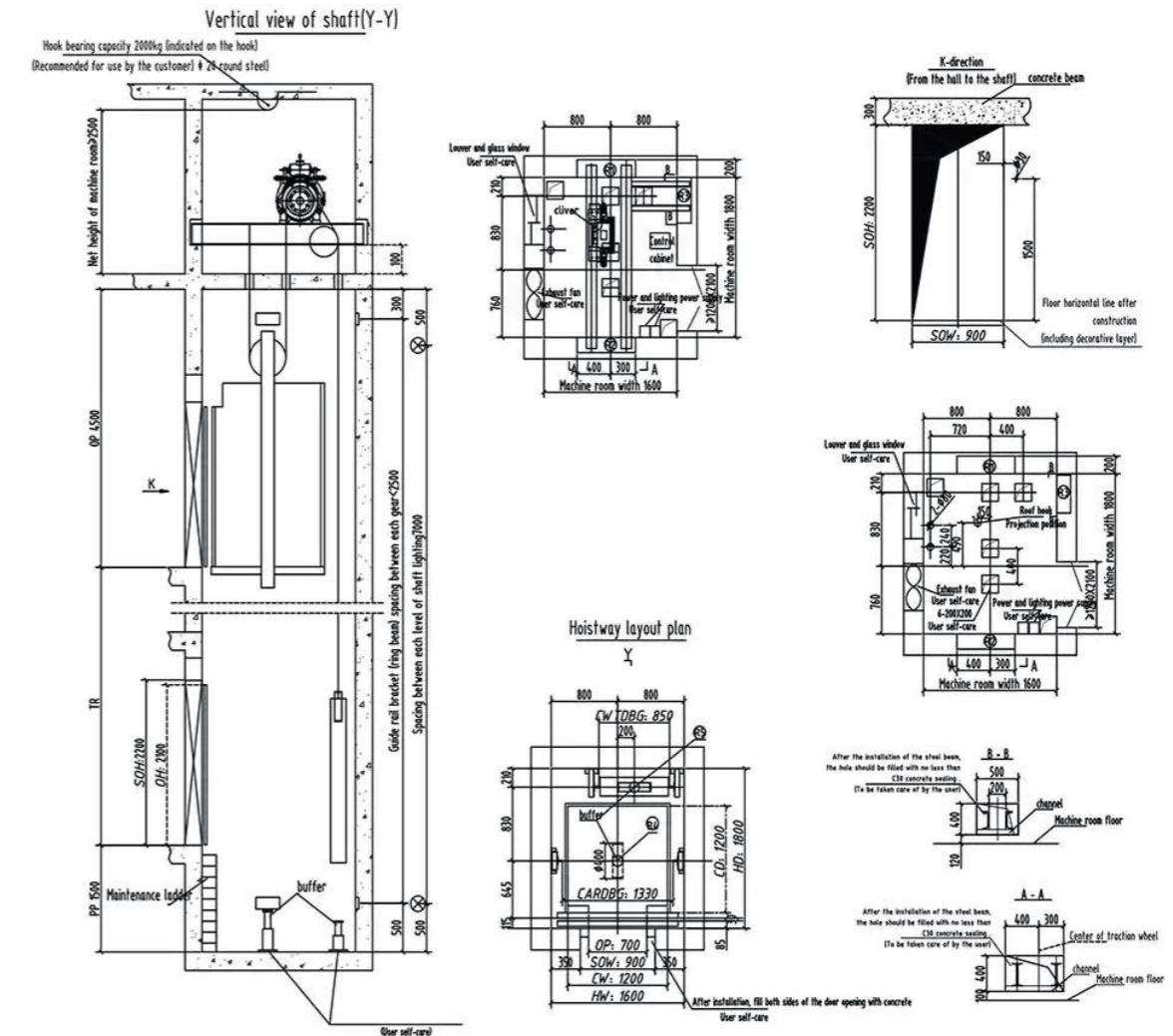


D07
Optional

Arival Light (PVC)



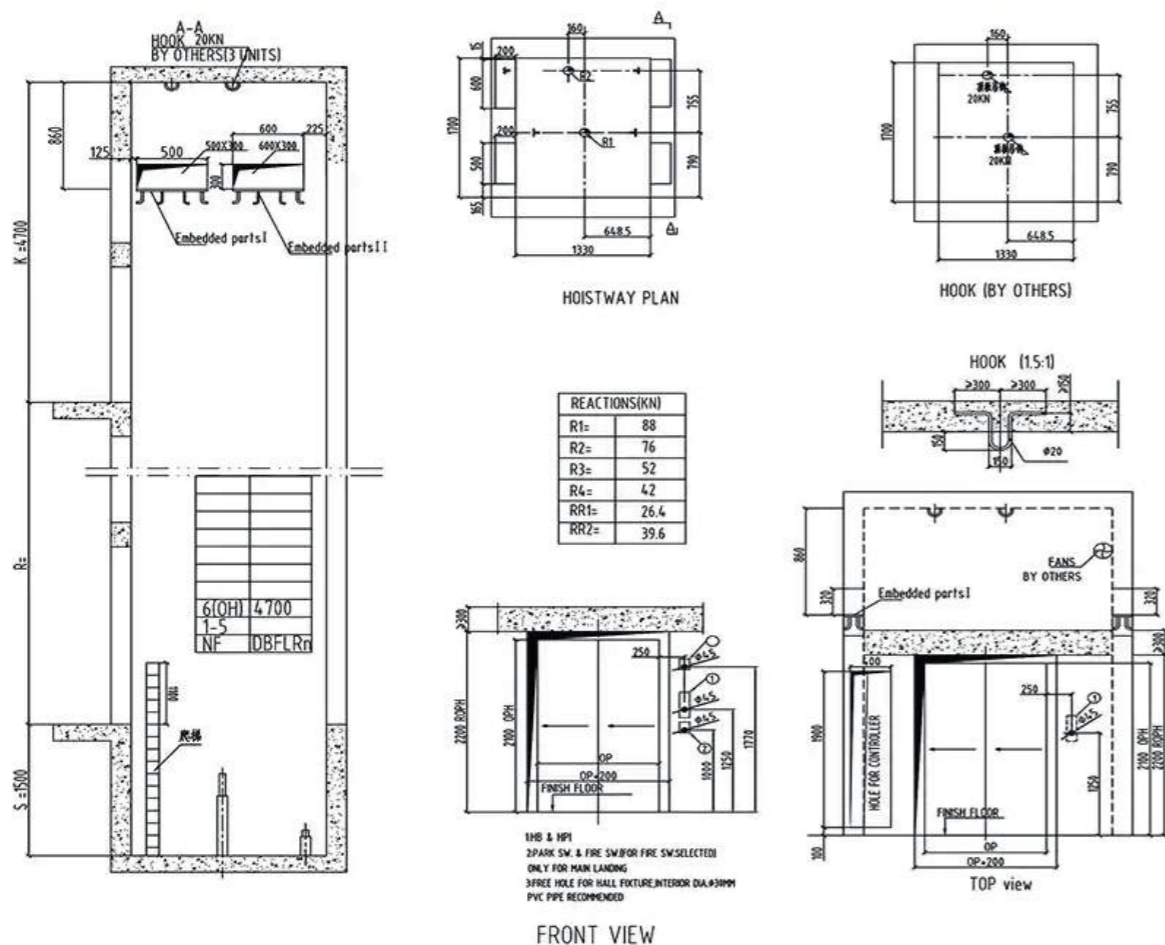
Colors series



Load (kg)	Speed (m/s)	Net dimension of car (mm)					Net dimension of hoistway (mm)					Net dimension of machine room (mm)			Maximum floor	Maximum travelling (m)	
		Width	Depth	Height	Door open width	Door open height	Width	Depth	Gate width	Gate height	Pit	Over head	Width	Depth			Height
450	1.0	1100	1100	2500	700	2100	1600	1500	900	2200	1500	4300	1600	1500	2500	15	45
	1500										4350	20				60	
630	1.5	1400	1100	2500	800	2100	1850	1700	1000	2200	1600	4500	1850	1700	2500	24	72
	1600										4550	30				90	
	1500										4350	20				60	
800	1.5	1400	1350	2500	800	2100	1850	1950	1000	2200	1600	4500	1850	1950	2500	24	72
	1600										4550	30				90	
	1500										4350	20				60	
1000	1.5	1600	1500	2500	900	2100	2050	2100	1100	2200	1600	4500	2050	2100	2500	24	72
	1600										4550	30				90	
	1500										4350	20				60	
1150	1.5	2000	1350	2500	1100	2100	2500	2100	1300	2200	1600	4650	2500	2100	2500	24	72
	1650										4700	30				90	
	1550										4500	20				60	
1350	1.5	2000	1500	2500	1100	2100	2500	2200	1300	2200	1600	4650	2500	2200	2500	24	72
	1650										4700	30				90	
	1550										4500	20				60	
1600	1.5	2000	1700	2500	1100	2100	2500	2400	1300	2200	1600	4650	2500	2400	2500	24	72
	1650										4700	30				90	
	1550										4500	20				60	

Note: Only for reference, final manufacture please follow contract.

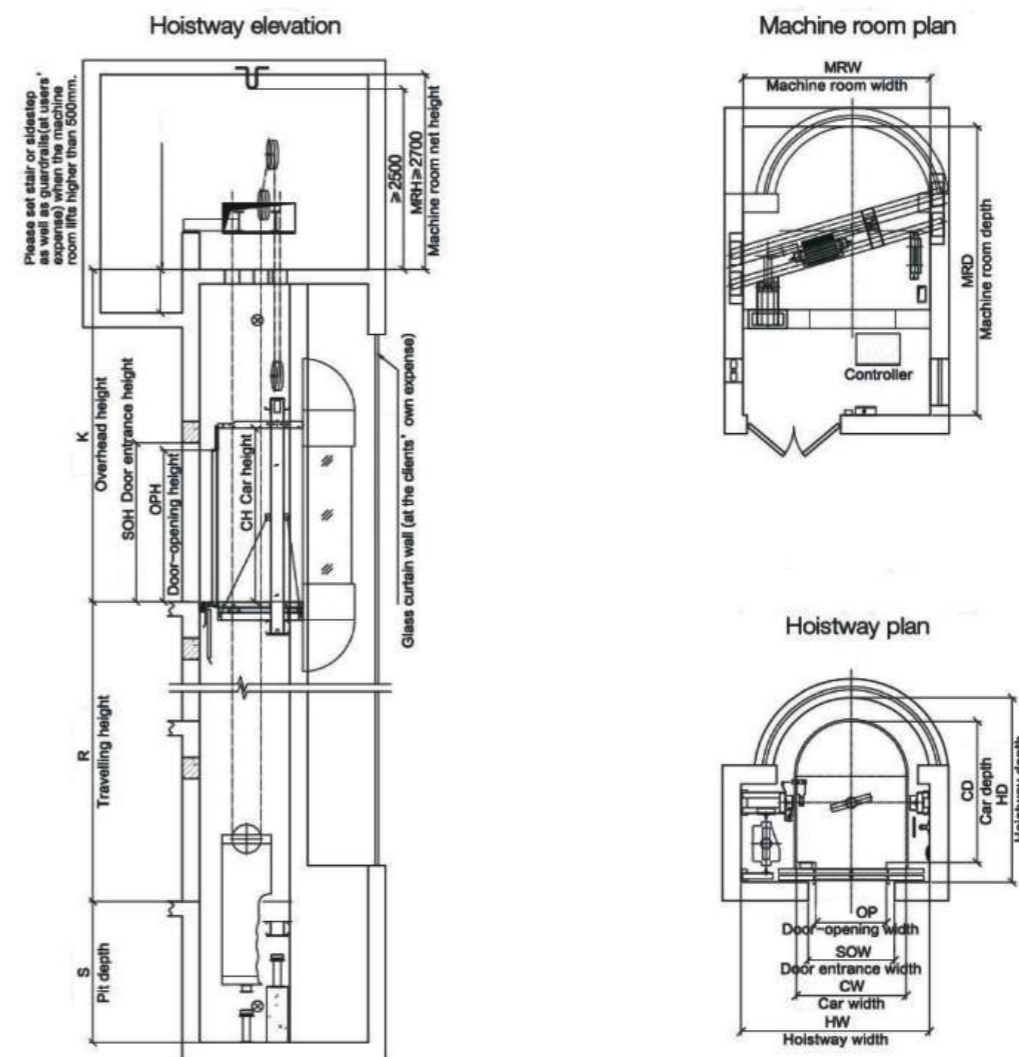
Machine Room Less Type Passenger Elevator



Load (kg)	Speed (m/s)	Net dimension of car (mm)					Net dimension of hoistway (mm)				Maximum floor	Maximum travelling (m)
		Width	Depth	Height	Door open width	Door open height	Width	Depth	Pit	Overhead		
450	1.0	1100	1100	2500	700	2100	1900	1700	1500	4300	20	60
	1500						1300	1500	4300	20	60	
630	1.0	1100	1400	2500	800	2100	2000	1800	1600	4500	30	80
	1500						1700	1600	4500	30	80	
	1700						1700	1700	4600	36	80	
800	1.0	1400	1350	2500	900	2100	2200	1750	1500	4300	20	60
	1500						1750	1600	4500	30	80	
	1700						1750	1700	4600	36	80	
1000	1.0	1600	1500	2500	900	2100	2400	1900	1500	4300	20	60
	1500						1900	1600	4500	30	80	
	1700						1900	1700	4600	36	80	
1150	1.0	1600	1700	2500	1000	2100	2650	2200	1600	4300	20	60
	1500						2200	1600	4500	30	80	
	1700						2200	1650	4600	36	80	
1350	1.0	1700	1800	2500	1100	2100	2750	2250	1600	4450	20	60
	1500						2250	1600	4550	30	90	
	1700						2250	1650	4600	36	105	
1600	1.0	1700	2000	2500	1100	2100	2750	2400	1600	4450	20	60
	1500						2400	1600	4550	30	90	
	1700						2400	1650	4600	36	105	
2000	1.0	1900	2000	2500	1100	2100	2750	2400	1600	4450	20	60
	1500						2400	1600	4550	30	90	
	1700						2400	1650	4600	36	105	

Note: Only for reference, final manufacture please follow contract.

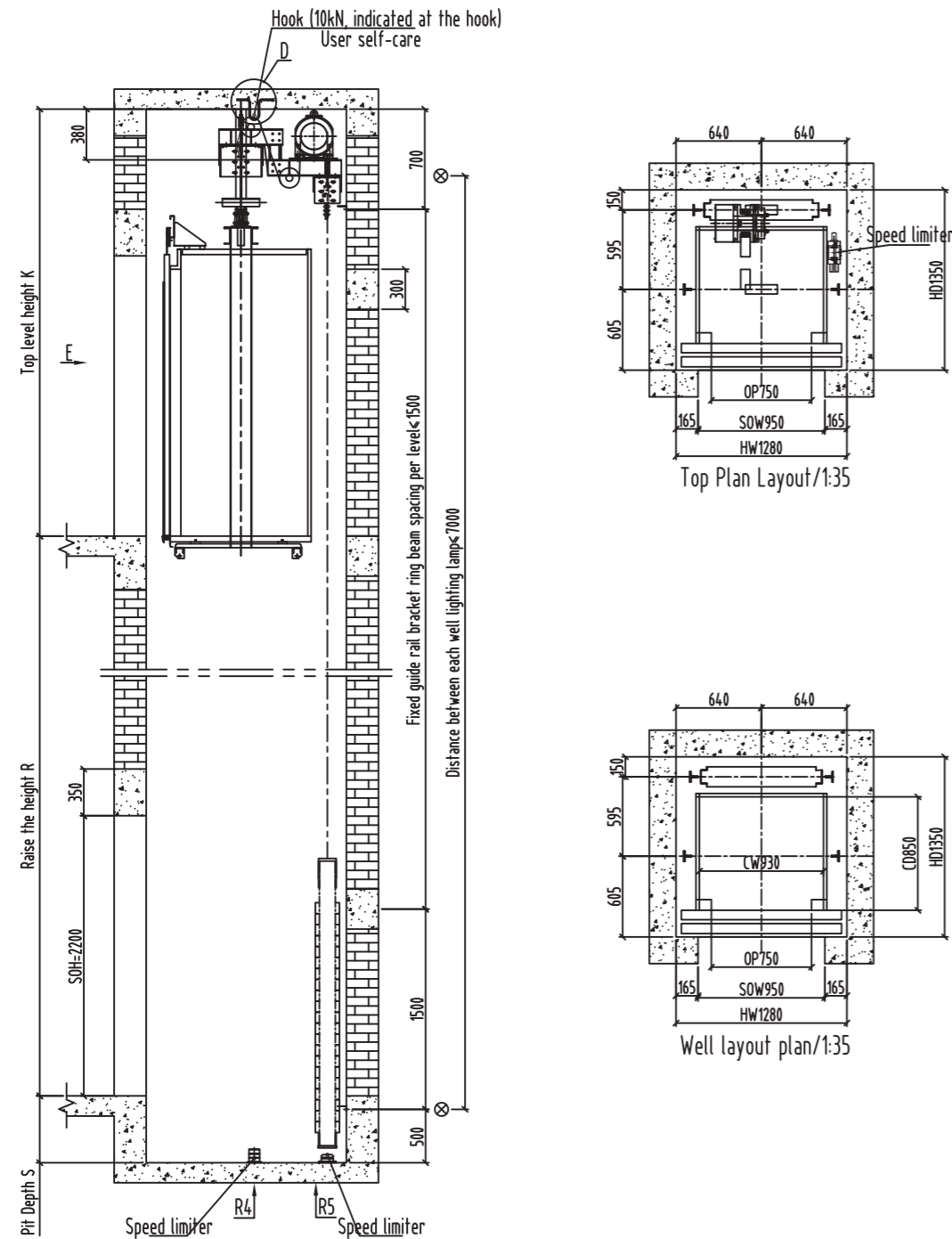
Machine Room Type Panoramic Elevator



Load (kg)	Speed (m/s)	Net dimension of car (mm)					Net dimension of hoistway (mm)					Net dimension of machine room (mm)			Maximum floor	Maximum travelling (m)	
		Width	Depth	Height	Door open width	Door open height	Width	Depth	Gate width	Gate height	Pit	Over head	Width	Depth			Height
800	1.0	1250	1700	2500	800	2100	2250	2250	1000	1950	4400	2250	3600	2700	16	50	
	2000														4550	25	80
	2050														4600	30	90
1000	1.0	1400	1800	2500	900	2100	2400	2350	1100	1950	4400	2400	3700	2700	16	50	
	2000														4550	25	80
	2050														4600	30	90
1150	1.0	1400	2000	2500	900	2100	2400	2550	1100	1950	4400	2400	3900	2700	16	50	
	2000														4550	25	80
	2050														4600	30	90
1350	1.0	1600	2000	2500	900	2100	2500	2550	1100	1950	4400	2500	3900	2700	16	50	
	2000														4550	25	80
	2050														4600	30	90
1600	1.0	1600	2250	2500	900	2100	2500	2800	1100	1950	4400	2500	4000	2700	16	50	
	2000														4550	25	80
	2050														4600	30	90

Note: Only for reference, final manufacture please follow contract.

Machine Room Type Home Elevator



Load (kg)	Speed (m/s)	Net dimension of car (mm)					Net dimension of hoistway (mm)					Maximum floor	Maximum travelling (m)	
		Width	Depth	Height	Door open width	Door open height	Width	Depth	Gate width	Gate height	Pit			Over head
225	0.4	900	1100	2300	800	2100	1550	1500	1000	2200	≥ 500	≥ 2900	5	12
320	0.4	1000	1200				1650	1600					5	12
400	0.4	1100	1300				1750	1700					5	12

Note: Only for reference, final manufacture please follow contract.

Customer Service Center

We deliver end-to-end service throughout the entire project lifecycle. Dedicated account managers ensure proactive communication and a deep understanding of your needs, enabling us to provide refined, responsive support. Our commitment includes a program of regular operational status reviews to guarantee your equipment's continuous optimal performance.



Intelligent IoT Platform

Fuji Industry Elevator's intelligent IoT platform leverages cutting-edge technology and our vast repository of maintenance data to revolutionize elevator service. We provide unparalleled, data-driven intelligence for our clients and a smarter experience for passengers.

- Intelligent early-alert system for elevator safety
- Fast and efficient reaction to elevator issues
- Open and honest elevator maintenance service
- Around-the-clock live monitoring system

